



# LaSalle Park / Beck's Lake

Focused Remediation



# Site History

- Waste materials, including lead and other hazardous substances, were disposed of at the Site from the 1930s to the mid-1950s
- In the 1960s, the City acquired the property and developed LaSalle Park without awareness of past contamination
- The federal Comprehensive Environmental Response, Compensation, and Liability Act of 1980 (CERCLA) was passed decades after the City acquired the park, and makes any person, including a municipality, who has ever owned or operated contaminated land potentially responsible to clean it up, regardless of if they caused the contamination



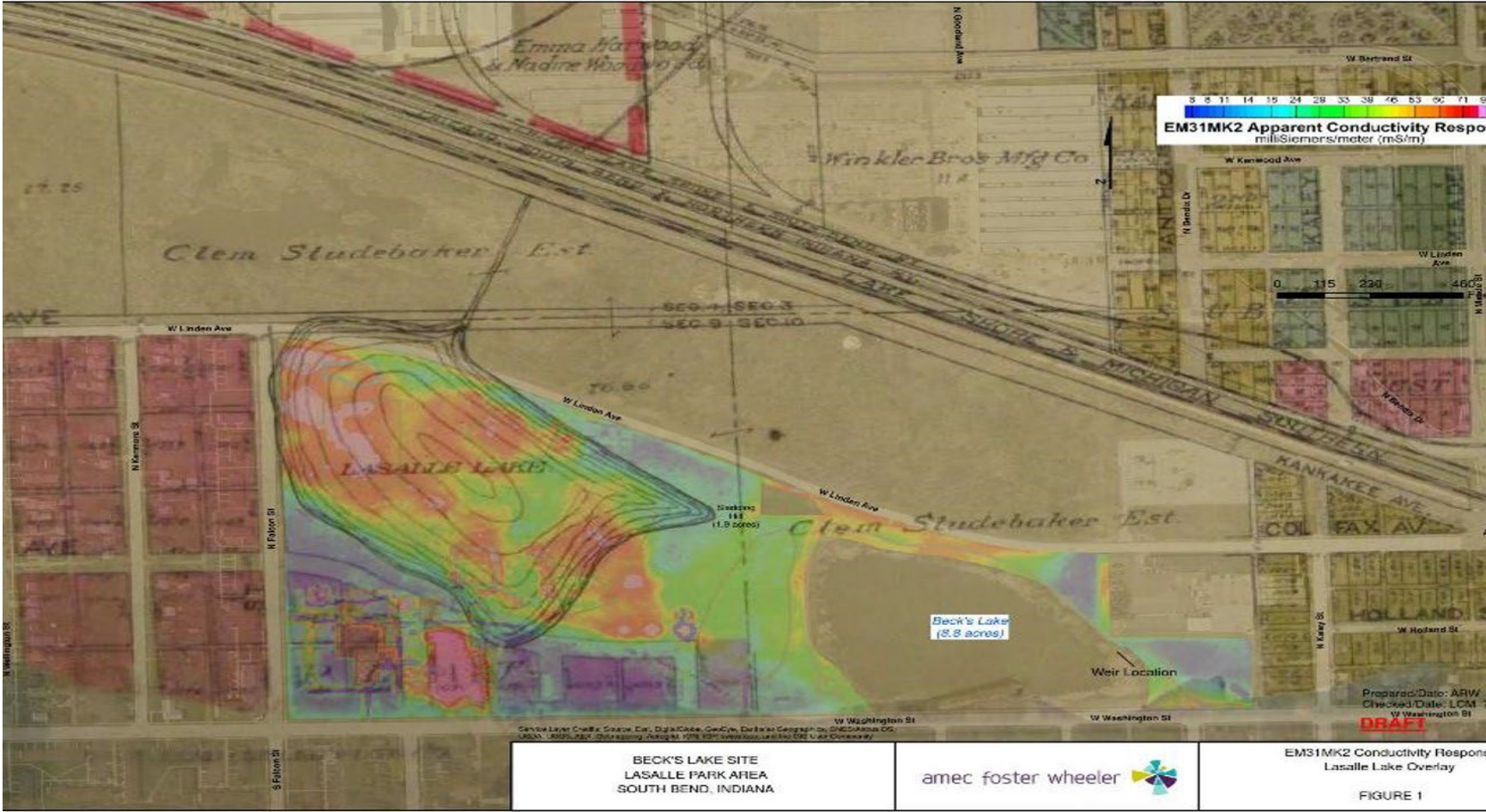
# Recent EPA Background

- In 2015, an administrative order on consent (ASAOC) was negotiated and signed by the City of South Bend and Honeywell International Inc. to perform focused Remedial Investigation/Feasibility Study (RIFS) on the 40-acre LaSalle Park properties east of Falcon Street.
- After planning documents were approved by USEPA in 2016, the LaSalle Park Area Remedial Investigation of the park and soils was completed



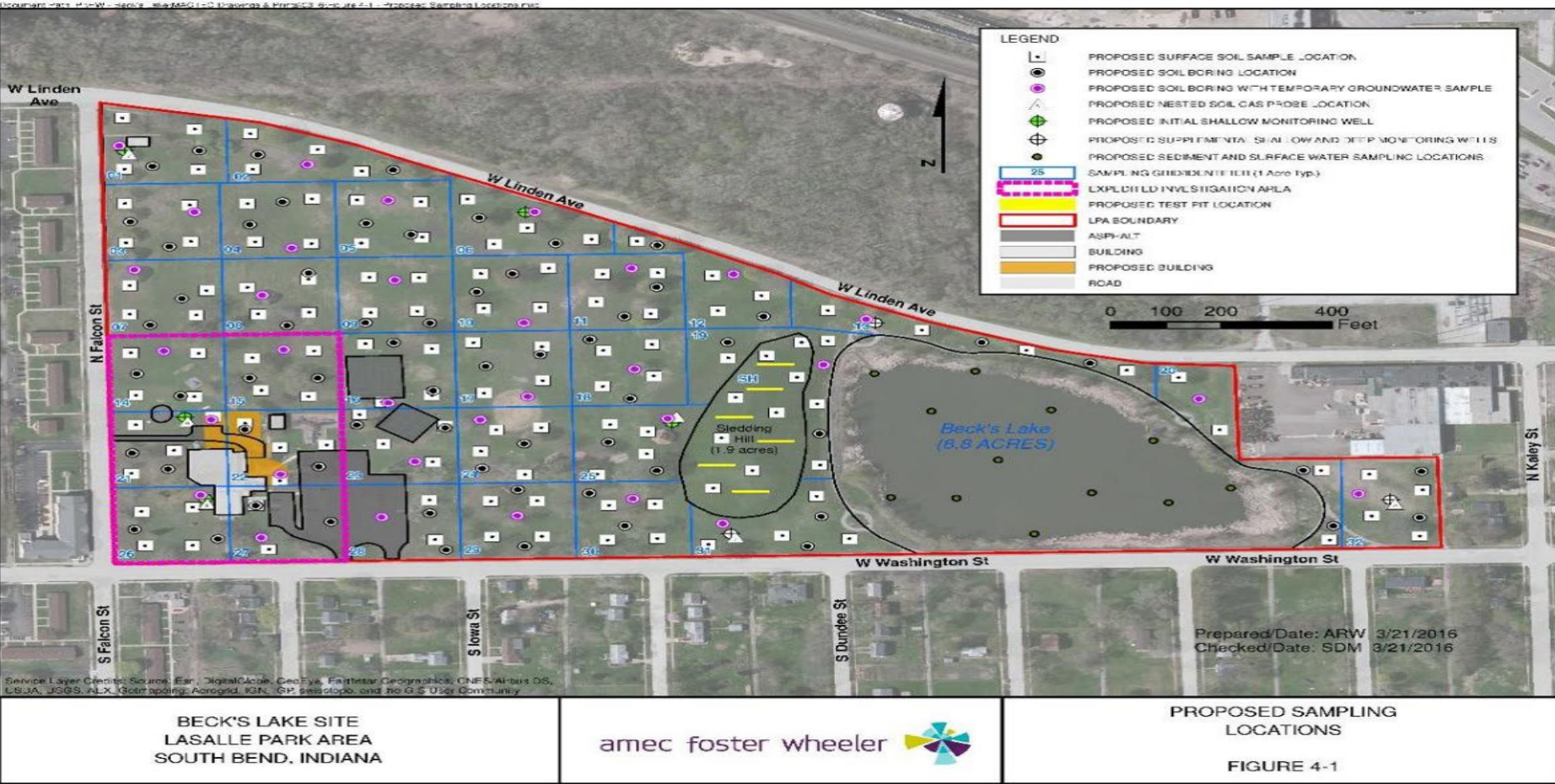


# Geophysical Data Locating Former Dump

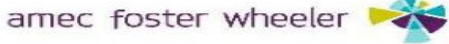




# Location of Previous Sampling in 2016



BECK'S LAKE SITE  
LASALLE PARK AREA  
SOUTH BEND, INDIANA



PROPOSED SAMPLING  
LOCATIONS  
FIGURE 4-1



# Further Site Investigation in 2019

- Results from over 200 additional soil samples collected in November and December 2019 throughout the park identified areas where lead was found within the first foot of soil exceeding EPA cleanup goals.
- Together, the 2016 and 2019 sampling efforts included several thousand analytical results – a very large amount of data for a site this size.
- Together, the City and Honeywell have expended nearly \$5 million to investigate the area.
- The upcoming final phase of the project may cost an additional \$1.5 - 2.0 million.



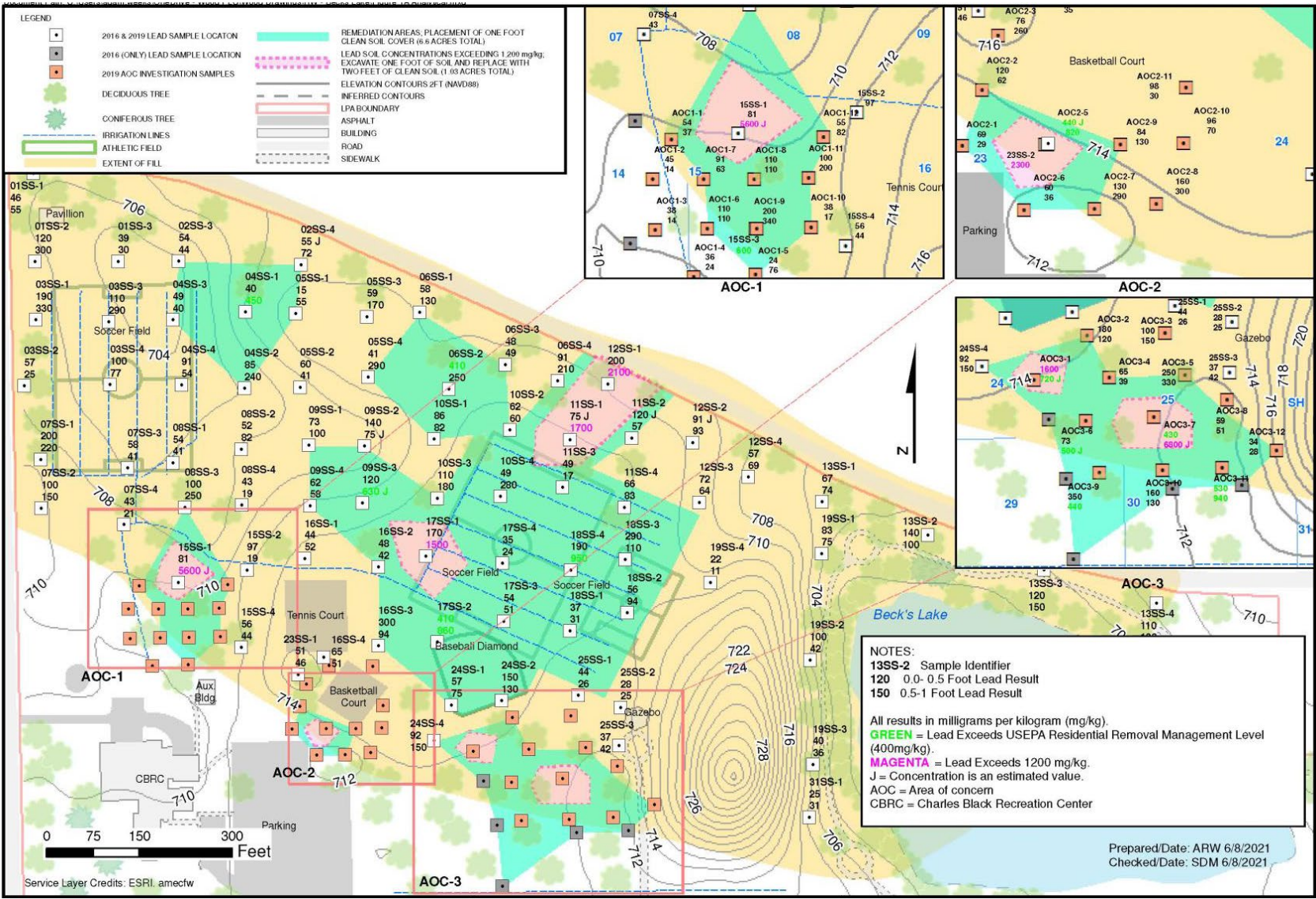
# Next Steps: Remedial Action

- To be extra cautious, EPA desires to have one foot of soil excavated, backfilled and capped where lead exists greater than 1,200 parts per million.
- EPA also desires that one foot of additional soil cap be added to existing areas where lead exceeds 400 parts per million.
- EPA has always indicated that the park poses no immediate health threat and EPA continues to believe this to be true.





# Remedial Action Areas





# Timeline

- City of South Bend Board of Public Works will publish Request to Advertise on March 22
- Bids due to Board of Public Works by April 26th
- Contract awarded at the May 10 Board of Public Works meeting
- City will host another public information session about specific work timelines in May or June before work begins



# Venues Parks & Arts

## LaSalle Park Concepts



- New Basketball Courts
- Picnic / Performance Pavilion
- Park Trails - Connectivity
- Outdoor Restroom Facility
- On-Street Parking & Lot Repairs
- New Baseball/Soccer (incl' irrigation)
- Trees, Landscaping, Lighting



# Conclusion

- LaSalle Park in its current condition poses no imminent threat to the health of the community using the park
- City team will hold a second info session once a contract has been awarded in May or June to provide specific start dates for remediation
- Learn more and see monthly updates at [southbendin.gov/park/becks-lake-epa-superfund-information/](https://southbendin.gov/park/becks-lake-epa-superfund-information/)



**Questions?**

# Questions for EPA?



All questions for EPA can be forwarded to:

- **Matt Villicana** – On-Scene Coordinator –  
villicana.matthew@epa.gov
- **Adrian Palomeque** – Community Involvement  
Coordinator – palomeque.adrian@epa.gov
- **Motria Caudill** – Environmental Health  
Scientist – mcaudill@atsdr.gov
- **Website** – [www.epa.gov/superfund/becks-lake](http://www.epa.gov/superfund/becks-lake)